

# SHOULD GOVERNMENT CONTROL YOUR PERSONAL CHOICE?

## TOBACCO

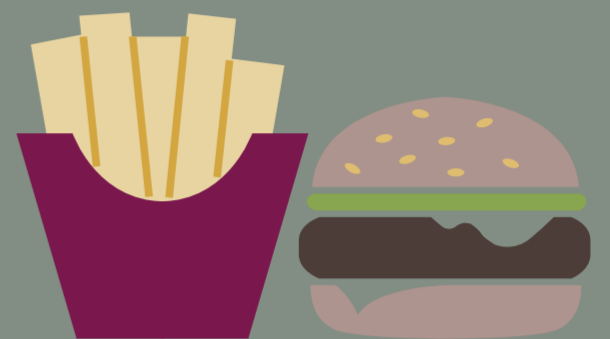


## ALCOHOL

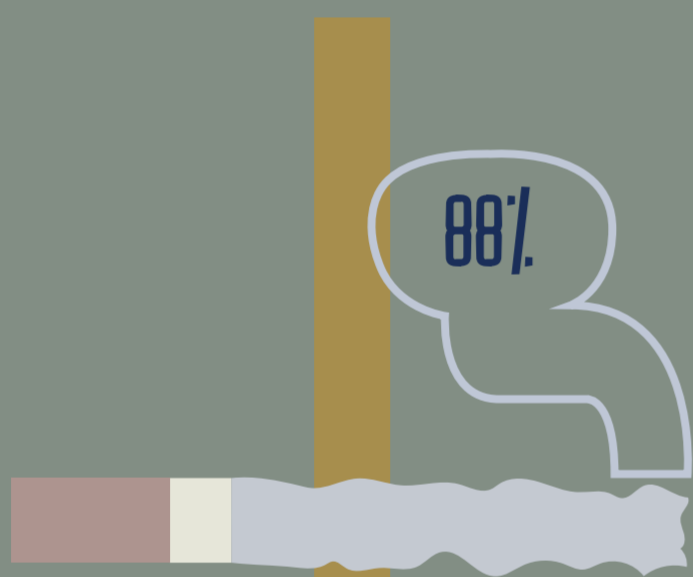


## H.F.S.S.

(HIGH FAT, SALT & SUGAR FOODS)



## TAX



REGULAR



PREMIUM

ON A TYPICAL PACK OF 20 PREMIUM CIGARETTES 77% OF THE RRP IS TAX – FOR SOME LESS EXPENSIVE BRANDS, IT IS 88%.

IN THE UK, FOR AVERAGELY PRICED SPIRITS NEARLY 80% OF THE COST IS TAX, AND FOR WINE NEARLY 60%.



"A SUGARS TAX SHOULD BE DEVELOPED TO INCREASE THE COST OF SUGAR-RICH FOOD AND DRINKS."  
PROFESSOR PHILIP JAMES